

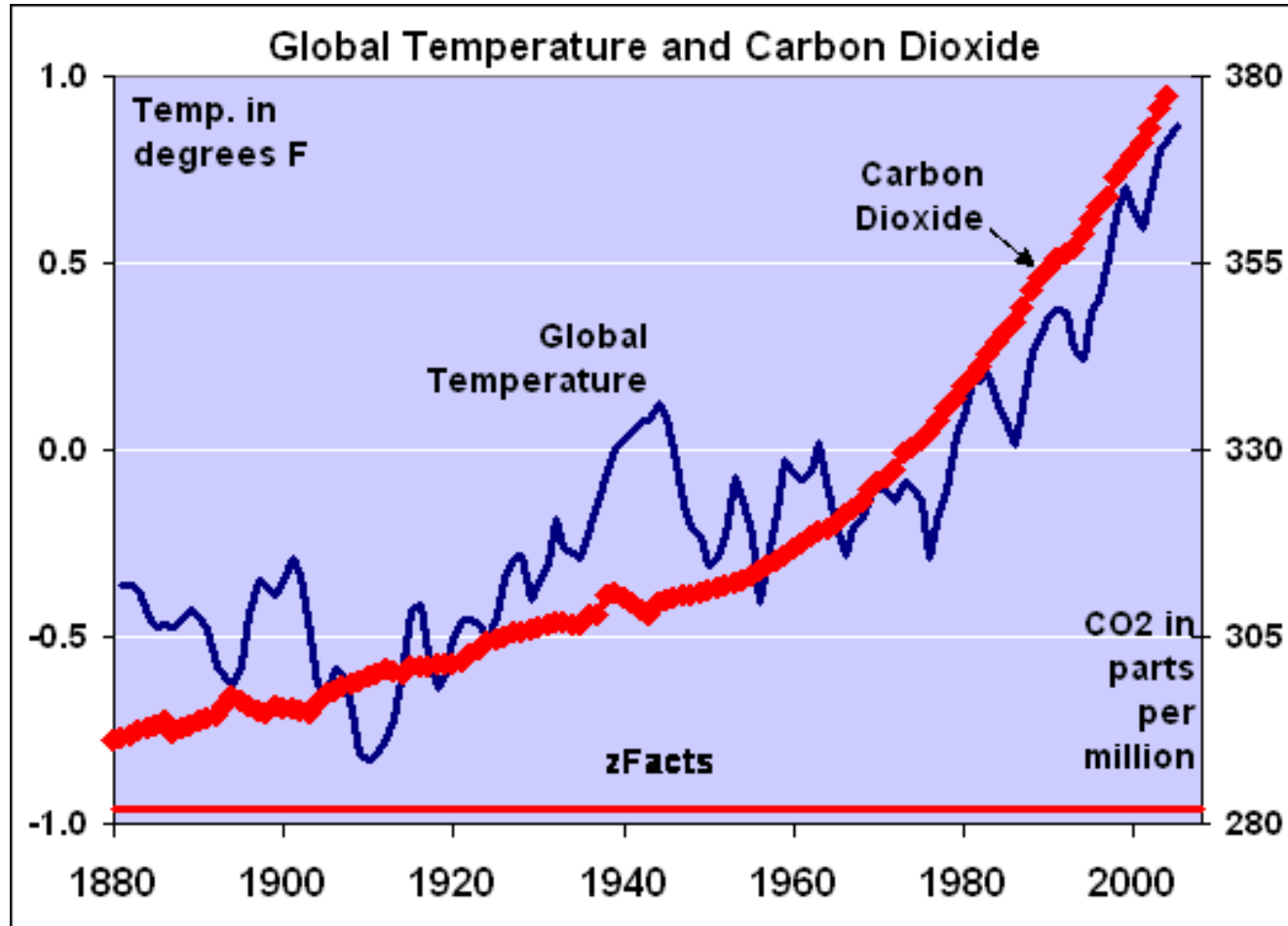
Climate Change

Supplementary Planning Document (SPD)

Overview

- **Background and context**
- **The Climate Change SPD**
- **Next steps**
- **Questions**

Global warming



Changing climate

South East England

	Season	Central estimate
Average rise in temperature	Summer	+ 3.9°C
	Winter	+ 3°C
Change in average rainfall	Summer	- 22%
	Winter	+ 22%
Sea level change	All year	+ 17cm

UK Climate Projections 2018, (with no policy change)

CO₂ from development

- **40%** of UK CO₂ emitted by households
- **2 tonnes** CO₂ per annum to run a typical recent home - 75% from the gas boiler
- A best practice home consumes **75% less energy** than the above 'typical' home
- A best practice home can be **zero carbon to operate** with solar panels fitted
- **£20,000+** more to retrofit to best practice later than to build to best practice now
- **50 tonnes** CO₂ emitted to build an average home (embodied carbon)

Buyers of brand-new homes face £20,000 bill to make them greener

Critics say the costs could have been avoided if ministers had agreed to bring in low-carbon standards sooner



The Guardian 23/1/2021

Climate change response

Climate change mitigation

- Measures to stabilise or reverse climate change over time
- Reducing greenhouse gas emissions, targeting net zero carbon
- The Net Zero carbon toolkit

Climate change adaptation

- Measures that respond to the way the climate is changing
- Improving the resilience of buildings and built-up areas to climatic extremes

National context

- **Climate Change Act 2008** commitment to net zero carbon emissions by 2050
- **Sixth Carbon Budget 2020** committed to a 78% CO₂ reduction target by 2035, compared to 1990 levels.
- **The Planning and Compulsory Purchase Act 2004** requires that local plans include policies for development and land use to contribute to the mitigation of, and adaptation to, climate change.
- **NPPF** “The planning system should support the transition to a low carbon future in a changing climate” (para 152)

NFDC context

- **NFDC Climate and Nature Emergency declaration 2021**
- **NFDC Local Plan**
 - Policy STR1: Achieving sustainable development ... (iv) Ensuring that new development is adaptable to the future needs of occupiers and future-proofed for climate change ...
 - Policy ENV3: Design quality and local distinctiveness ... New development will be required to: ... (v). Incorporate design measures that improve resource efficiency and climate change resilience and reduce environmental impacts wherever they are appropriate and capable of being effective...
- **Greener Housing Strategy**

Climate Change SPD 1

Purpose

- to clarify how developers should address climate change in planning applications, in order to meet Local Plan requirements

Objective

- To ensure that developments are climate change optimised before detailed plans are submitted for approval

Mechanism

- Evidenced by a **Climate Change Statement**

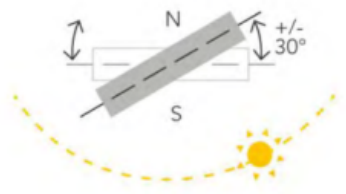
Climate Change SPD 2

Mechanisms continued

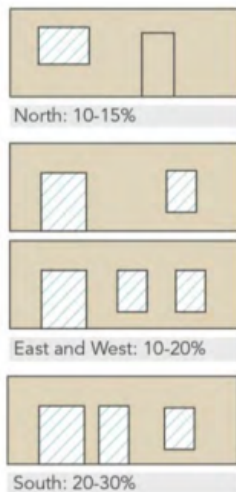
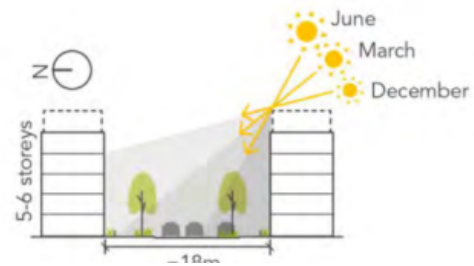
- The SPD sets out best practice approaches or standards that developers are encouraged to target or adopt, to
 - take all practicable steps to decarbonise the running of buildings
 - to be net zero in operation if possible, otherwise net zero ready
 - to make a meaningful start on the more difficult challenge of reducing embodied carbon in construction; and
 - to ensure development is adapted for future climatic extremes.

Climate mitigation 1

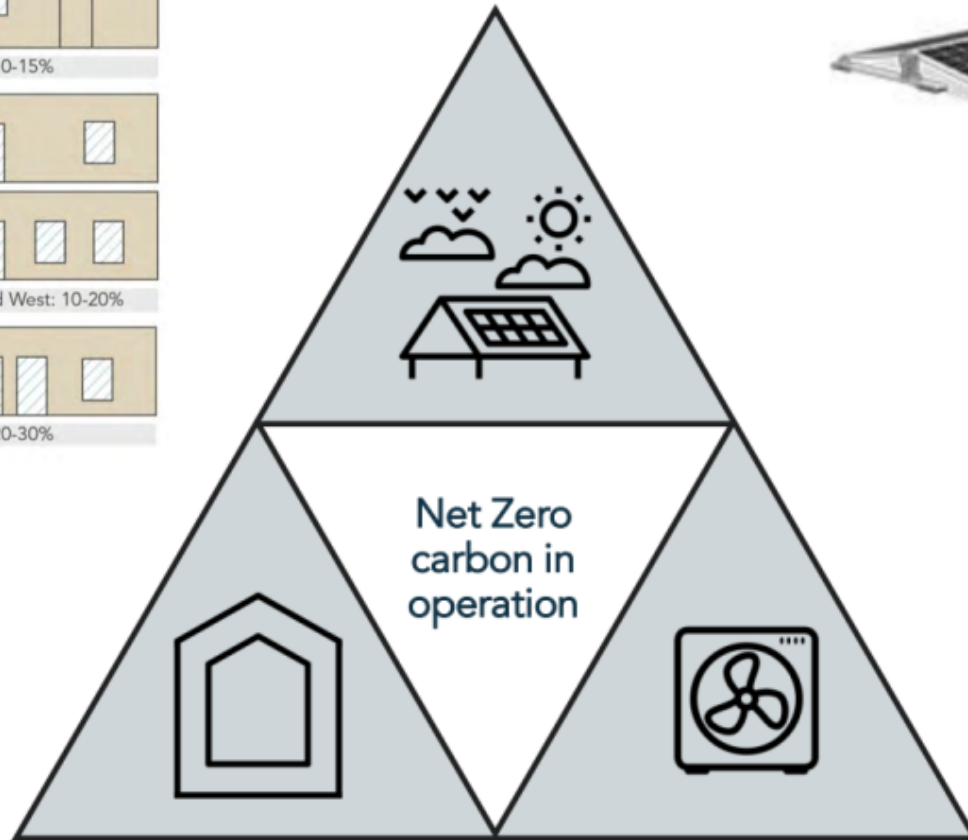
Renewable energy



Elevations facing +/- 30° south will benefit from useful solar gains in the winter



Energy efficient design



Low carbon heat

Monoblock or split heat pump

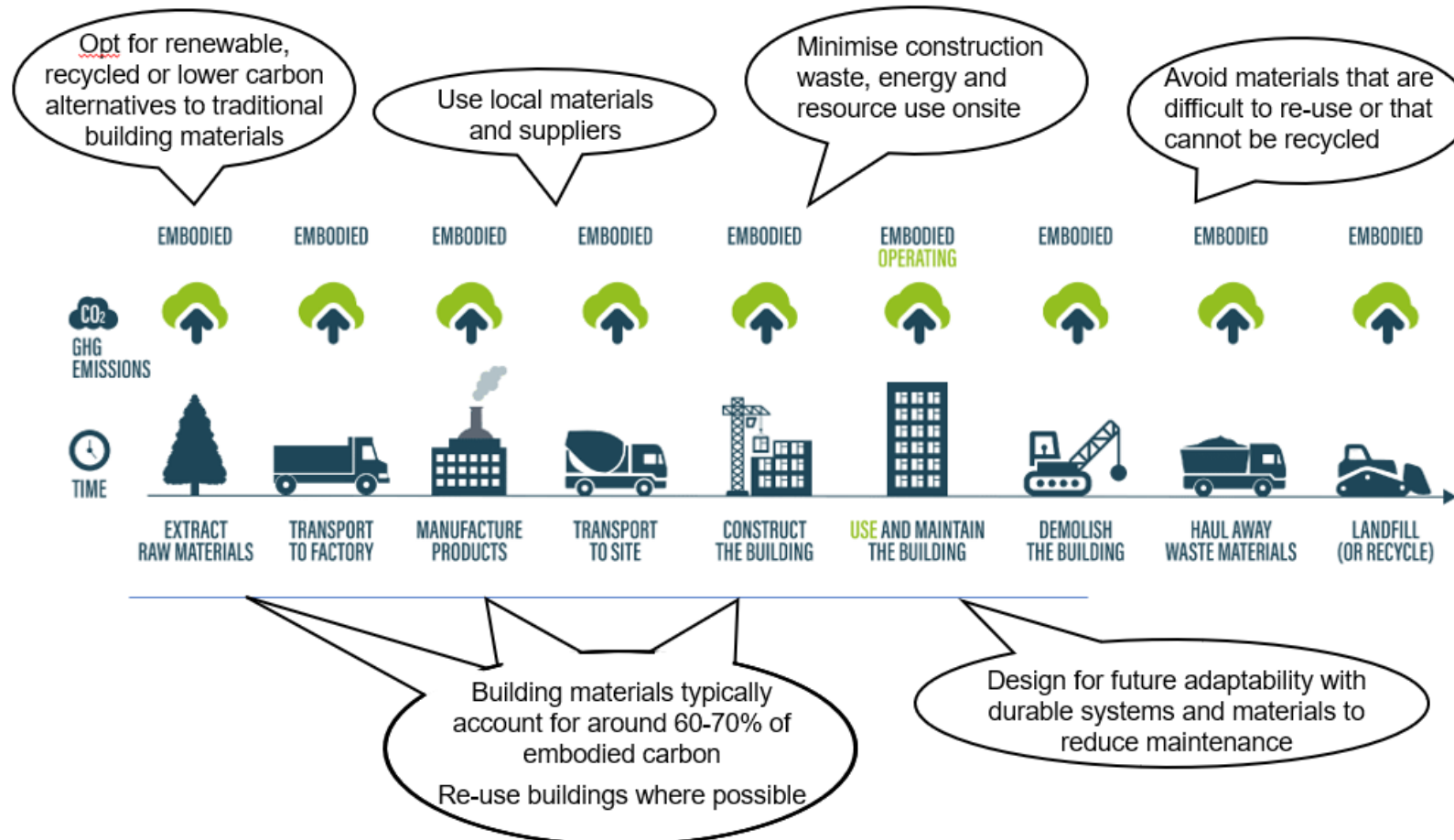
Climate mitigation 2

Enabling sustainable and active travel

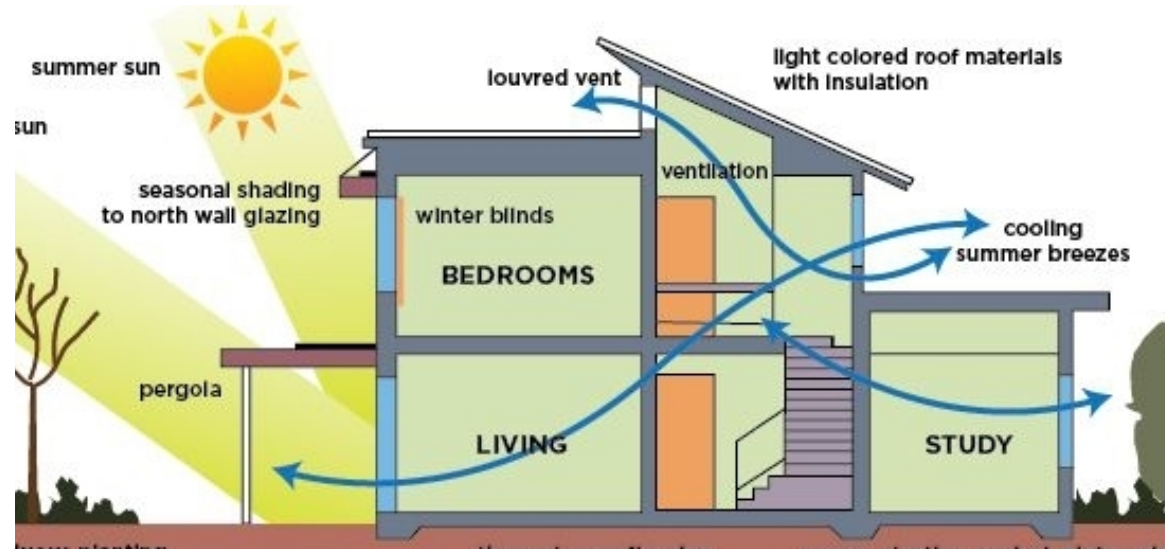


Climate mitigation 3

Reducing embodied carbon emissions



Climate change adaption



Next steps

- **1 March 2023** report to Cabinet recommending SPD publication for public consultation
- **May-June 2023** public consultation - after the election Purdah period
- **Summer 2023** review and publish consultation feedback, update SPD
- **Autumn 2023** report updated SPD to Council via Cabinet recommending adoption

Any questions?

?